



Drysuit Liner

MSL351

The MSL351 Drysuit Liner's unique Variable Insulation™ design provides optimal comfort and mobility for wear with drysuits. Variable Insulation is provided by combining different weight fleece panels to maximize heat loss when wearing the dry suit out of the water and provide extra insulation protection when in cold water. The chest arms and shoulders use Polartec® Classic 100 fabric, while the back and legs use Polartec® Classic 200. Stretch panels provide optimal mobility. This liner is ideally suited for strenuous work conditions. Variable Insulation™ technology was developed by Mustang Survival to meet the demands of our military customers.

The MSL351 Drysuit Liner provides warmth without weight, is highly breathable, quick drying, durable and machine washable.

The MSL351 Drysuit Liner is designed for extreme environmental conditions that might dictate the need for hypothermia protection. The liner may be worn as an integral component of an immersion system.

The liner has a long vertical front entry slide fastener closure with dual sliders for quick donning and to facilitate relief. It also has fitting straps at the thumbs and ankles.

The wicking fabric and thread are designed to transport excess moisture (sweat) away from the wearer's body. The moisture may then evaporate and diffuse through the outer layers of the ensemble.

The advanced design of the MSL351 Drysuit Liner is engineered to provide the highest level of thermal protection, where the wearer needs it the most, particularly for protection against cold water immersion.

The MSL351 Drysuit Liner is compatible with MSD560, MSD565, MSD575, MSD575 SR and MSD585.

Drysuit liners have a minimum order quantity and order lead time up to eight weeks. Contact Mustang Survival Customer Service for more details.



Drysuit Liner

MSL351

Hypothermia Protection

Hypothermia protection is provided when the Mustang MSL351 is worn with a drysuit and insulating undergarments. Thermal performance of the MSL351 Drysuit Liner is dependent on the type and thickness of the drysuit and undergarment worn.

Material

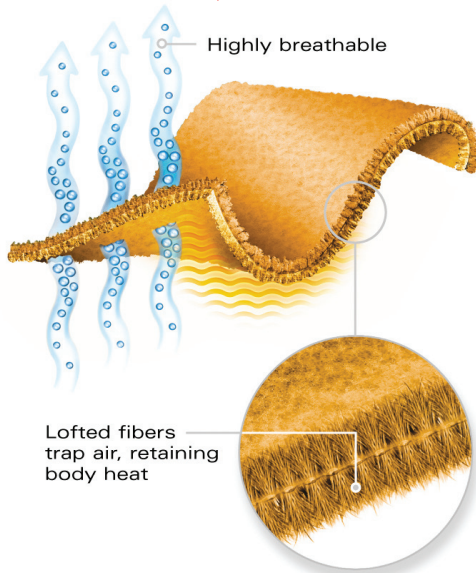
Polartec® Classic



CLASSIC 100



CLASSIC 200



Sizes

Size	Height (in)	Chest (in)	Height (cm)	Chest (cm)
XS	61 - 65	33 - 36	155 - 165	84 - 91
S	64 - 68	36 - 39	163 - 173	91 - 99
M	67 - 71	39 - 42	170 - 180	99 - 107
L	70 - 74	42 - 45	178 - 188	107 - 114
XL	73 - 77	45 - 48	185 - 196	114 - 122
XXL	76 - 80	48 - 51	193 - 203	122 - 130

Weight

The weight of a Size L MSL351 is approximately: 1.4lb (0.6 kg).

Color

Black with charcoal

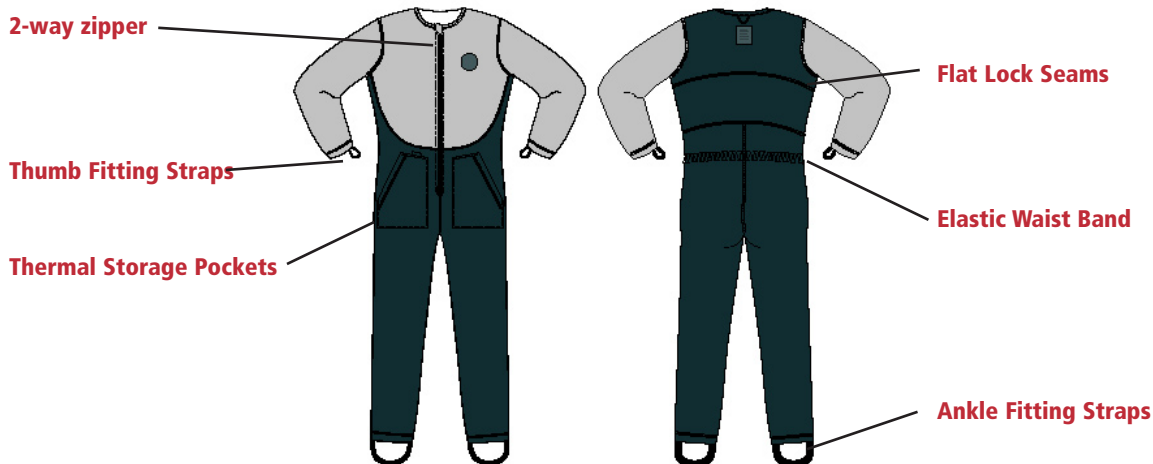
Mustang Survival is an ISO9001 Certified Company.

All suits are tested to ensure the highest level of reliability and performance.

Our commitment to quality has earned our Richmond facilities ISO9001 registration, the highest of all international standards.

This is our guarantee you're receiving the ultimate in design and manufacturing.

Mustang Survival has a policy of continuous improvement and reserves the right to modify products or features at any time.



MUSTANG SURVIVAL, USA

3870 Mustang Way, Bellingham, WA, USA 98226
 TEL 360.676.1782 TOLL FREE 1.800.526.0532
 FAX 360.676.5014 EMAIL mustangusa@mustangsurvival.com

MUSTANG SURVIVAL, Canada

3810 Jacombs Road, Richmond, B.C., Canada V6V 1Y6
 TEL 604.270.8631 TOLL FREE 1.800.661.6181
 FAX 604.270.0489 EMAIL mustang@mustangsurvival.com

